

Cavity Wall

Next generation insulation powered by graphite.

Foam-Control MAX™ is a next generation insulation product line with a maximum R-value powered by graphite. Foam-Control MAX is a premium grade insulation manufactured to provide architects, specifiers, distributors, and contractors all the features and benefits inherent in a high quality insulation.

- High R-value that never changes and is stable over time
- High compressive strength of 10, 15, or 25 psi
- Closed cell insulation with superior moisture resistance
- High drying potential to rapidly release absorbed moisture
- Meets NFPA 285 code requirements

Powered by Graphite.

Foam-Control MAX is comprised of many small pockets of air within a polymer matrix containing graphite. The graphite reflects radiant heat energy like a mirror, increasing the material's resistance to heat flow or R-value.

Strength/R-value.

FOAM-CONTROL™ MAXX	R-value ¹		Compressive Strength ² , psi
	75°F	40°F	
MAX 150	5.0	5.2	15
MAX 250	5.0	5.3	25

¹ R-value units are °F-ft²-h/Btu and are based on 1-1/8" thickness.
² Compressive strength @ 10% deformation.

Foam-Control MAX is available in a wide range of standard R-values and thicknesses to meet your needs.

R-5, R-7.5, R-10, R-15, R-20

Product thicknesses for standard boards are provided in the Foam-Control MAX Thickness & R-value. Project requirements vary, so Foam-Control MAX can be ordered in any R-value thicknesses to meet your needs.

Proven to meet, or exceed, building codes.

Foam-Control MAX is manufactured under an industry leading quality control program monitored by UL and further recognized in UL Evaluation Report UL ER11812-05.



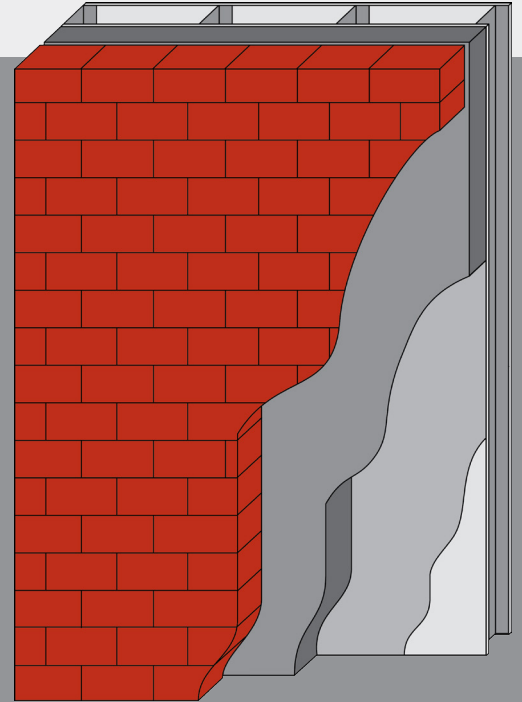
Foam-Control MAX meets ASTM C578, "Standard Specification for Rigid, Cellular Polystyrene Thermal Insulation".

NFPA 285 Assemblies.

A key building code requirement is providing NFPA 285 compliant wall assemblies. Numerous assemblies which include Foam-Control MAX as an insulation component have successfully passed the rigorous NFPA 285.

FOAM-CONTROL™ MAXX

Powered by Graphite



FOAM FACE-OFF: Foam-Control MAX outperforms XPS.

- Foam-Control MAX provides more R-value at a lower cost
- XPS uses blowing agents that cause R-value loss over time
- Foam-Control MAX has a stable long term R-value
- Foam-Control MAX available in 15 and 25 psi strengths at a lower cost
- XPS has shown to take on moisture in building applications where water is present and has a low potential to dry out
- Foam-Control MAX has a superior drying potential

Moisture Resistance.


When tested in accordance with ASTM C1512, "Standard Test Method for Characterizing the Effect of Exposure to Environmental Cycling on Thermal Performance of Insulation Products" Foam-Control MAX maintains its R-value and strength after severe exposure to moisture and freeze-thaw cycles.

Drying Potential.

Foam-Control MAX is manufactured to resist moisture absorption in wetting conditions and release absorbed moisture quickly during drying periods, which means Foam-Control MAX maintains R-value.

Flexible Product Options.

Foam-Control MAX is available factory scored and can be field snapped to produce 16", 24", and 48" widths.

One of the most destructive forces anywhere is termites. Foam-Control MAX can be  manufactured with Perform Guard, a proven and safe additive, that effectively resists termites.

Foam-Control MAX with Perform Guard meets ICC ES AC239, "Acceptance Criteria for Termite-Resistant Foam Plastics".

Product Protection.

Foam-Control MAX can be damaged by prolonged direct sunlight exposure or by reflected sunlight. Foam-Control MAX must be protected during storage, transportation, and at the project with a light colored opaque material. Please refer to the Foam-Control MAX Handling Instructions.

Recyclable.

After it's life as a building insulation, Foam-Control MAX is 100% recyclable. It can be ground into granules and reincorporated into new Foam-Control MAX products. Or it can be thermally processed into a resin that's used to manufacture other new products.

Ready to take control? Start here.

If you're ready to have Foam-Control MAX contribute to your next project, just contact your nearest Foam-Control MAX manufacturer and Technical Sales Representative. We will be happy to give you design consultation, information about Foam-Control MAX products, pricing, and answers to all of your questions.

ACH

FOAM TECHNOLOGIES

For further information about

Foam-Control EPS

visit www.achfoam.com



Foam-Control products are manufactured by AFM Corporation licensees.

Copyright © 2016 AFM Corporation. All rights reserved. Printed in USA. Foam-Control, Foam-Control MAX, and Perform Guard are trademarks of AFM Corporation, Lakeville, MN.

NEOPOR is a registered trademark of BASF SE. UL logo is a registered trademark of UL LLC. USGBC logo is a registered trademark of U.S. Green Building Council.

FCM11-07/16

FOAM-CONTROL™
MAXX

NEXT GENERATION
INSULATION POWERED
BY GRAPHITE.